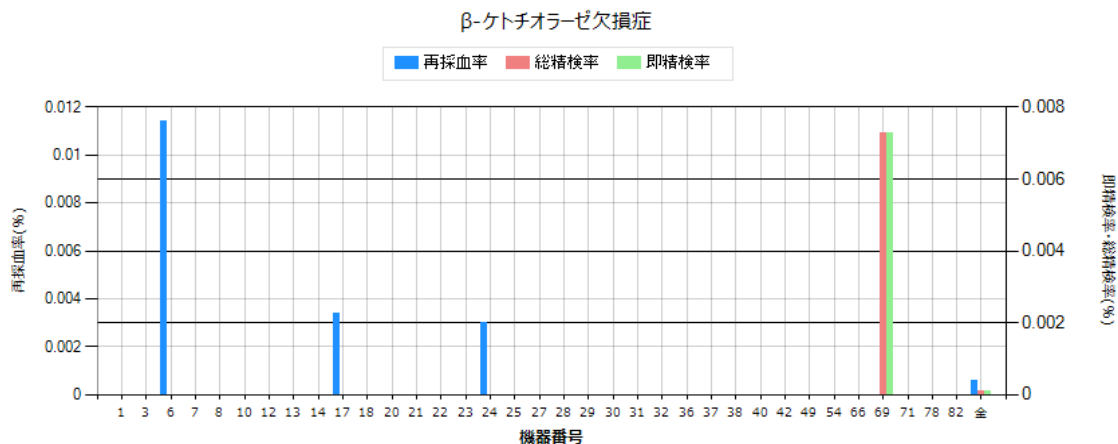
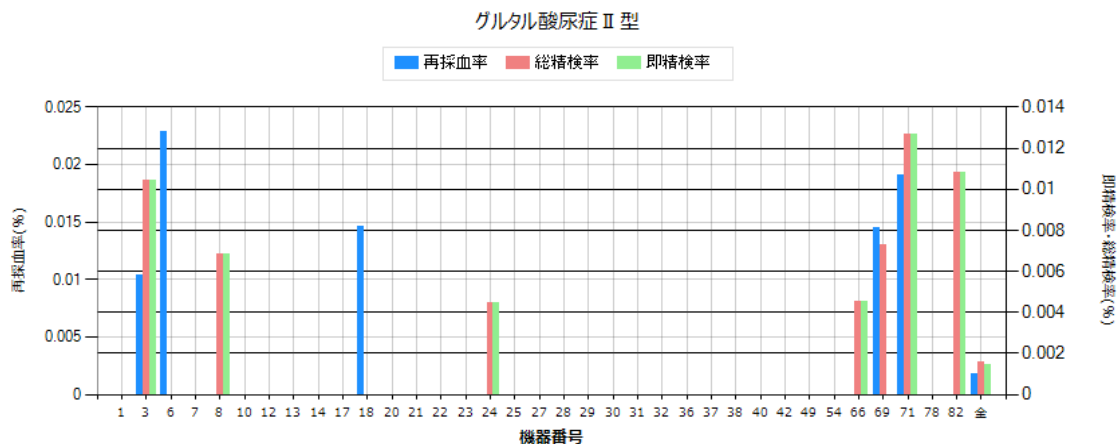


機器No.□	検体数□	再採血数	即精検数	再採血後精検数	総精検数	発見患者数	再採血率	即精検率	再採血後精検率	総精検率	発見頻度	陽性適中率 (PPV)
1	54,891	0	0	0	0	1	-	-	-	-	1:54891	-
3	19,159	1	0	0	0	0	0.00521	-	-	-	-	-
6	8,759	0	0	0	0	-	-	-	-	-	-	-
7	11,652	0	0	0	0	0	-	-	-	-	-	-
8	14,660	1	0	0	0	0	0.00682	-	-	-	-	-
10	13,710	0	0	0	0	-	-	-	-	-	-	-
12	11,270	0	0	0	0	0	-	-	-	-	-	-
13	89,550	0	0	0	0	-	-	-	-	-	-	-
14	39,815	0	0	0	0	0	-	-	-	-	-	-
17	58,597	0	0	0	0	-	-	-	-	-	-	-
18	41,136	7	0	1	1	-	0.01701	-	0.00243	0.00243	-	-
20	12,480	-	-	-	0	-	-	-	-	0	-	-
21	10,798	0	0	0	0	-	-	-	-	-	-	-
22	6,680	0	0	0	0	-	-	-	-	-	-	-
23	13,548	0	0	0	0	1	-	-	-	-	1:13548	-
24	66,779	6	1	1	2	-	0.00898	0.00149	0.00149	0.00299	-	-
25	6,683	0	0	0	0	-	-	-	-	-	-	-
27	8,444	1	0	1	1	1	0.01184	-	0.01184	0.01184	1:8444	100
28	17,318	0	0	0	0	-	-	-	-	-	-	-
29	22,886	0	0	0	0	-	-	-	-	-	-	-
30	9,489	0	0	0	0	1	-	-	-	-	1:9489	-
31	24,766	0	0	0	0	-	-	-	-	-	-	-
32	4,702	0	0	0	0	0	-	-	-	-	-	-
36	12,425	0	0	0	0	-	-	-	-	-	-	-
37	7,905	0	0	0	0	-	-	-	-	-	-	-
38	5,357	0	0	0	0	-	-	-	-	-	-	-
40	38,816	0	0	0	0	-	-	-	-	-	-	-
42	6,204	0	1	0	1	1	-	0.01611	-	0.01611	1:6204	100
49	12,337	0	0	0	0	-	-	-	-	-	-	-
54	56,321	-	-	-	0	-	-	-	-	0	-	-
66	22,049	0	0	0	0	0	-	-	-	-	-	-
69	13,731	1	0	0	0	0	0.00728	-	-	-	-	-
71	15,754	22	0	4	4	1	0.13964	-	0.02539	0.02539	1:15754	25
78	47,033	0	0	0	0	1	-	-	-	-	1:47033	-
82	27,685	8	0	1	1	0	0.02889	-	0.00361	0.00361	-	0
全体	833,389	47	2	8	10	7	0.00563	0.00023	0.00095	0.00119	1:119056	70
						max	0.13964	0.01611	0.02539	0.02539		100
						min	0.00521	0.00149	0.00149	0		0

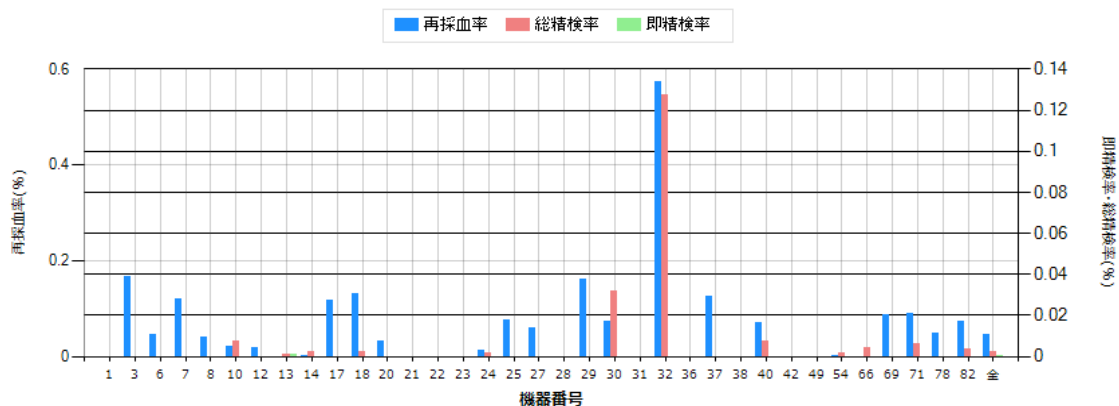


機器No.□	検体数□	再採血数	即精検数	再採血後 精検数	総精検数	発見患者数	再採血率	即精検率	再採血後 精検率	総精検率	発見頻度	陽性適中率 (PPV)
1	54,891	0	0	0	0	-	-	-	-	-	-	-
3	19,159	0	0	0	0	0	-	-	-	-	-	-
6	8,759	1	0	0	0	-	0.01141	-	-	-	-	-
7	11,652	0	0	0	0	0	-	-	-	-	-	-
8	14,660	0	0	0	0	0	-	-	-	-	-	-
10	13,710	0	0	0	0	-	-	-	-	-	-	-
12	11,270	0	0	0	0	0	-	-	-	-	-	-
13	89,550	0	0	0	0	-	-	-	-	-	-	-
14	39,815	0	0	0	0	0	-	-	-	-	-	-
17	58,597	2	0	0	0	-	0.00341	-	-	-	-	-
18	41,136	0	0	0	0	-	-	-	-	-	-	-
20	12,480	-	-	-	0	-	-	-	-	0	-	-
21	10,798	0	0	0	0	-	-	-	-	-	-	-
22	6,680	0	0	0	0	-	-	-	-	-	-	-
23	13,548	0	0	0	0	0	-	-	-	-	-	-
24	66,779	2	0	0	0	-	0.00299	-	-	-	-	-
25	6,683	0	0	0	0	-	-	-	-	-	-	-
27	8,444	0	0	0	0	0	-	-	-	-	-	-
28	17,318	0	0	0	0	-	-	-	-	-	-	-
29	22,886	0	0	0	0	-	-	-	-	-	-	-
30	9,489	0	0	0	0	-	-	-	-	-	-	-
31	24,766	0	0	0	0	-	-	-	-	-	-	-
32	4,702	0	0	0	0	0	-	-	-	-	-	-
36	12,425	0	0	0	0	-	-	-	-	-	-	-
37	7,905	0	0	0	0	-	-	-	-	-	-	-
38	5,357	0	0	0	0	-	-	-	-	-	-	-
40	38,816	0	0	0	0	-	-	-	-	-	-	-
42	6,204	0	0	0	0	0	-	-	-	-	-	-
49	12,337	0	0	0	0	-	-	-	-	-	-	-
54	56,321	-	-	-	0	-	-	-	-	0	-	-
66	22,049	0	0	0	0	0	-	-	-	-	-	-
69	13,731	0	1	0	1	0	-	0.00728	-	0.00728	-	0
71	15,754	0	0	0	0	0	-	-	-	-	-	-
78	47,033	0	0	0	0	-	-	-	-	-	-	-
82	27,685	0	0	0	0	0	-	-	-	-	-	-
全体	833,389	5	1	0	1	0	0.00059	0.00011	0	0.00011	-	0
						max	0.01141	0.00728		0.00728		0
						min	0.00299	0.00728		0		0



機器No.□	検体数□	再採血数	即精検数	再採血後 精検数	総精検数	発見患者数	再採血率	即精検率	再採血後 精検率	総精検率	発見頻度	陽性適中率 (PPV)
1	54,891	0	0	0	0	-	-	-	-	-	-	-
3	19,159	2	2	0	2	0	0.01043	0.01043	-	0.01043	-	0
6	8,759	2	0	0	0	-	0.02283	-	-	-	-	-
7	11,652	0	0	0	0	0	-	-	-	-	-	-
8	14,660	0	1	0	1	0	-	0.00682	-	0.00682	-	0
10	13,710	0	0	0	0	-	-	-	-	-	-	-
12	11,270	0	0	0	0	0	-	-	-	-	-	-
13	89,550	0	0	0	0	-	-	-	-	-	-	-
14	39,815	0	0	0	0	0	-	-	-	-	-	-
17	58,597	0	0	0	0	-	-	-	-	-	-	-
18	41,136	6	0	0	0	-	0.01458	-	-	-	-	-
20	12,480	-	-	-	0	-	-	-	-	0	-	-
21	10,798	0	0	0	0	-	-	-	-	-	-	-
22	6,680	0	0	0	0	-	-	-	-	-	-	-
23	13,548	0	0	0	0	0	-	-	-	-	-	-
24	66,779	0	3	0	3	-	-	0.00449	-	0.00449	-	-
25	6,683	0	0	0	0	-	-	-	-	-	-	-
27	8,444	0	0	0	0	0	-	-	-	-	-	-
28	17,318	0	0	0	0	-	-	-	-	-	-	-
29	22,886	0	0	0	0	-	-	-	-	-	-	-
30	9,489	0	0	0	0	-	-	-	-	-	-	-
31	24,766	0	0	0	0	-	-	-	-	-	-	-
32	4,702	0	0	0	0	0	-	-	-	-	-	-
36	12,425	0	0	0	0	-	-	-	-	-	-	-
37	7,905	0	0	0	0	-	-	-	-	-	-	-
38	5,357	0	0	0	0	-	-	-	-	-	-	-
40	38,816	0	0	0	0	-	-	-	-	-	-	-
42	6,204	0	0	0	0	0	-	-	-	-	-	-
49	12,337	0	0	0	0	-	-	-	-	-	-	-
54	56,321	-	-	-	0	-	-	-	-	0	-	-
66	22,049	0	1	0	1	0	-	0.00453	-	0.00453	-	0
69	13,731	2	0	1	1	0	0.01456	-	0.00728	0.00728	-	0
71	15,754	3	2	0	2	-	0.01904	0.01269	-	0.01269	-	-
78	47,033	0	0	0	0	-	-	-	-	-	-	-
82	27,685	0	3	0	3	0	-	0.01083	-	0.01083	-	0
全体	833,389	15	12	1	13	0	0.00179	0.00143	0.00011	0.00155	-	0
						max	0.02283	0.01269	0.00728	0.01269		0
						min	0.01043	0.00449	0.00728	0		0

カルニチントランスポーター異常症（全身性カルニチン欠乏症）



機器No.□	検体数□	再採血数	即精検数	再採血後精検数	総精検数	発見患者数	再採血率	即精検率	再採血後精検率	総精検率	発見頻度	陽性適中率 (PPV)
1	54,891	0	0	0	0	-	-	-	-	-	-	-
3	19,159	32	0	0	0	0	0.16702	-	-	-	-	-
6	8,759	4	0	0	0	-	0.04566	-	-	-	-	-
7	11,652	14	0	0	0	0	0.12015	-	-	-	-	-
8	14,660	6	0	0	0	0	0.04092	-	-	-	-	-
10	13,710	3	0	1	1	0	0.02188	-	0.00729	0.00729	-	0
12	11,270	2	0	0	0	0	0.01774	-	-	-	-	-
13	89,550	0	1	0	1	-	-	0.00111	-	0.00111	-	-
14	39,815	1	0	1	1	0	0.00251	-	0.00251	0.00251	-	0
17	58,597	68	0	0	0	-	0.11604	-	-	-	-	-
18	41,136	54	0	1	1	-	0.13127	-	0.00243	0.00243	-	-
20	12,480	4	0	0	0	0	0.03205	-	-	-	-	-
21	10,798	0	0	0	0	-	-	-	-	-	-	-
22	6,680	0	0	0	0	-	-	-	-	-	-	-
23	13,548	0	0	0	0	0	-	-	-	-	-	-
24	66,779	8	0	1	1	-	0.01197	-	0.00149	0.00149	-	-
25	6,683	5	0	0	0	-	0.07481	-	-	-	-	-
27	8,444	5	0	0	0	0	0.05921	-	-	-	-	-
28	17,318	0	0	0	0	-	-	-	-	-	-	-
29	22,886	37	0	0	0	0	0.16167	-	-	-	-	-
30	9,489	7	0	3	3	-	0.07376	-	0.03161	0.03161	-	-
31	24,766	0	0	0	0	-	-	-	-	-	-	-
32	4,702	27	0	6	6	0	0.57422	-	0.1276	0.1276	-	0
36	12,425	0	0	0	0	-	-	-	-	-	-	-
37	7,905	10	0	0	0	-	0.1265	-	-	-	-	-
38	5,357	0	0	0	0	-	-	-	-	-	-	-
40	38,816	27	0	3	3	-	0.06955	-	0.00772	0.00772	-	-
42	6,204	0	0	0	0	0	-	-	-	-	-	-
49	12,337	0	0	0	0	-	-	-	-	-	-	-
54	56,321	1	0	1	1	0	0.00177	-	0.00177	0.00177	-	0
66	22,049	0	0	1	1	0	-	-	0.00453	0.00453	-	0
69	13,731	12	0	0	0	0	0.08739	-	-	-	-	-
71	15,754	14	0	1	1	-	0.08886	-	0.00634	0.00634	-	-
78	47,033	23	0	0	0	-	0.0489	-	-	-	-	-
82	27,685	20	0	1	1	1	0.07224	-	0.00361	0.00361	1:27685	100
全体	833,389	384	1	20	21	1	0.04607	0.00011	0.00239	0.00251	1:833389	4.76
						max	0.57422	0.00111	0.1276	0.1276		100
						min	0.00177	0.00111	0.00149	0.00111		0